

Democratic People's Republic of Algeria
Ministry Of Higher Education and Scientific
Research



Student Guide

2024 - 2023

University of Mohammed
Seddik Ben Yahia-Jijel

Address: P.O. Box 89,
Ouled Aissa - Jijel
18000

Email : www.univ-jijel.dz
phone

034.54.71.34





Student guide

2023 - 2024

**Welcome to
University of Mohammed
Seddik Ben Yahia-Jijel**

www.univ-jijel.dz



الفهرس

speech by Profesor,Dr.

**Noureddine ben ali
cherif**

**Director of university of
Mohammed Seddik ben
yahia - jijel**



On the occasion of the start of the new academic season, it gives me great pleasure to extend my warmest congratulations and best wishes on behalf of myself and the university community of Mohammed Seddik Ben Yahia University to our new students who have joined our university. We wish them success and prosperity in their academic and intellectual journey within the premises of Mohammed Seddik Ben Yahia University in Jijel.

We are pleased to present to you this guide, which provides an overview of our university's structures, services, and available training programs, as well as the registration procedures and requirements. This guide aims to give you the opportunity to learn more about the university and its surroundings. I hope that it will be useful and informative, addressing your questions and concerns, and ultimately contributing to your success in your academic journey.

Introduction of Mohammed Seddik Ben Yahia University

<i>Overview of the University.....</i>	<i>7</i>
<i>Who is Mohammed Seddik Ben Yahia?</i>	<i>8</i>
<i>The University in a few numbers.....</i>	<i>9-10</i>
<i>The basic structures of the University.....</i>	<i>11 - 16</i>



The history of the establishment of Mohamed Seddik Ben Yahia University dates back to the year 2003, following a series of stages that began in 1986. Initially, it served as an annex to the University of Constantine. It later evolved into a high school for teachers in 1989/1988 and was subsequently elevated to a university center in 0889. As the center witnessed expansion on all levels, it became necessary to restructure and create a new university system capable of accommodating qualitative and quantitative development. Consequently, the center joined the ranks of Algerian universities in 1998.

Mohamed Seddik Ben Yahia University consistently aims to demonstrate its modernity and meet every challenge, emphasizing the importance of quality education and training. It strives to keep pace with economic development and adapt to modern scientific advancements. The university is committed to providing exceptional support to its students and offering comprehensive scientific and cultural training that aligns with contemporary scientific and technological changes. With the adoption of the new (LMD) system, which took effect in 2006/2005, Jijel University transformed into a multi-disciplinary institution.

Who is?

Mohamed Seddik Ben Yahia.



This humble man, who died as a martyr while fulfilling his sacred national duty and carrying a peaceful message to humanity, is not known to everyone. He was one of the noblest, most sincere, and kindest Algerian freedom fighters, as well as a talented poet who emerged from the immortal November Revolution.

Mohamed Seddik Ben Yahia was born on January 30, 1938, in Jijel. He earned a Bachelor's degree in Law from the University of Algiers and quickly showcased his exceptional intelligence and great talents on numerous occasions. These qualities enabled him to enter politics and diplomacy at a remarkably young age of only 26 years. He held various positions and played an active role in the revolutionary movement and political activities.

In 1955, he participated in the founding of the General Union of Algerian Muslim Students alongside Ahmed Taleb Ibrahimi and others.

He was involved in organizing the Algerian student strike and their subsequent integration into the National Liberation Front on May 19, 1956.

Moreover, he represented the National Liberation Front at the Youth Conference held in Bandung in 1956.

In 1960, he was appointed as a member of the National Council for the Algerian Revolution; and served as a member of the interim government of the Algerian Republic.

Mohamed Seddik Ben Yahia also played a significant role in the Algerian-French negotiations that took place in 1960-1962, influencing their course. His personal shrewdness and persuasive abilities were admired by the French figures participating in the negotiations, leading them to dub him the "Desert Fox."

He served as Algeria's ambassador to Moscow from 1965 to 1967.

Additionally, he held various ministerial positions, including Minister of Culture and Information from 1967 to 1970, Minister of Higher Education and Scientific Research from 1970 to 1976, Minister of Finance from 1976 to 1978, and ultimately Minister of Foreign Affairs from 1978 to 1982.

Tragically, Mohamed Seddik Ben Yahia passed away on the night of May 3, 1982, in a plane crash 71 km from the Iraq-Turkey border while on a diplomatic mission to resolve the conflict between Iraq and Iran. His loss was deeply mourned, as he left behind a legacy of dedication, intelligence, and remarkable contributions to Algeria and its people.

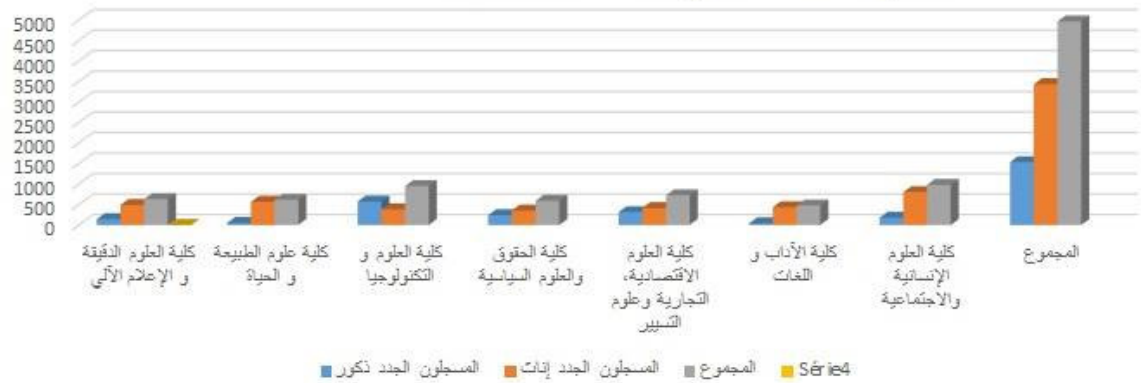
Jijel University in a few numbers

Jijel University has witnessed a qualitative leap reflected in tangible developments in terms of pedagogical structures, student and faculty numbers. Mohamed Seddik Ben Yahia University covers an area of approximately **312766** square meters:

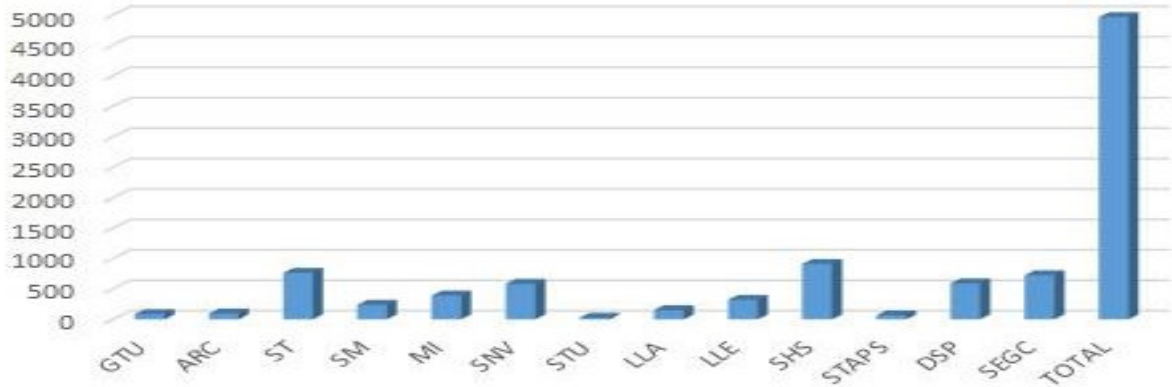
- * Jijel Campus spans **132 766** square meters and includes **3 faculties**.
- * Tassoust Campus spans **180 000** square meters and includes **4 faculties**.
- * The total number of students for the academic year 2022-2023 is estimated at **21621 students**, distributed as follows:
 - * **7892** students at Jijel Campus.
 - * **13729** students at Tassoust Campus.
- * The number of students enrolled in the Bachelor's program is **15817**.
- * The number of students enrolled in the Master's program is **5804**.
- * The number of students enrolled in the doctoral program is **920**.
- * The number of foreign students is **51**, representing **11** nationalities.
- * The total number of faculty members is **1047**.
- * The total number of staff members is **1144**.
The number of research laboratories is **32**.
- * Research structures: **01**.



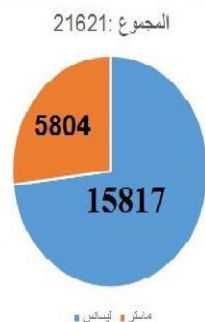
توزيع الطلبة الجدد حاملّي شهادة الكالوريا 2022 حسب الكليات



توزيع الطلبة الجدد حاملّي شهادة الكالوريا 2022 حسب الميادين



العدد الاجمالي للطلبة المسجلين في طوري الليسانس والماستر للسنة الجامعية 2022/2023 حسب الميادين



University's Basic Structures

University Directorate:



- ❖ Deputy Directorate for Higher Education in the first and second cycles, continuing education, certificates, and higher education in progression.
- ❖ Deputy Directorate for Postgraduate Education, University Qualifications, and Scientific Research.
- ❖ Deputy Directorate for External Relations, Cooperation, Promotion, Communication, and Scientific Events.
- ❖ Deputy Directorate for Development, Prospecting, and Guidance.

General Secretariat with its four branches:

- ❖ Subsidiary Directorate for Users and Training.
- ❖ Subsidiary Directorate for Finance and Accounting.
- ❖ Subsidiary Directorate for Facilities and Maintenance.
- ❖ Subsidiary Directorate for Scientific, Cultural, and Sports Activities.

University Shared Services

Printing and Audiovisual Center:

The Printing and Audiovisual Center is responsible for:

- ❖ Printing all informational documents about the university.
- ❖ Printing educational and teaching materials, as well as scientific brochures.
- ❖ Providing technical support for recording all audiovisual aids for educational documents.
- ❖ Coverage of various cultural, educational, and scientific events organized by the university.



It includes two branches:

Printing Branch:

It performs various tasks, including printing a large number of documents, administrative papers, magazines, and various data.

Audiovisual Branch:

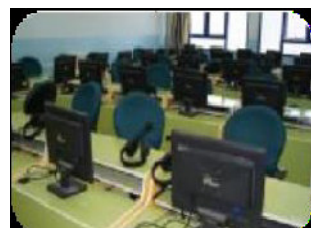
Its mission includes:

- ❖ Promoting and developing audiovisual activities in the university.
- ❖ Coverage of various cultural and scientific events such as symposiums, conferences, study circles, and seminars.
- ❖ Producing documentary films and scientific reports.
- ❖ Preserving films, audio tapes, and video tapes that serve as a data bank for various university structures.

Intensive Language Education Center:

The Intensive Language Education Center offers intensive language training in foreign languages with the main objective of:

- ❖ Supporting the acquisition of languages for students and improving their academic performance.
- ❖ Acquiring a new language for academic or professional purposes.
- ❖ Meeting the training needs of professionals and employees in public and private institutions in the province.



The Center for Information and Communication Systems, Televised Education, and Distance Learning

This center is responsible for:

- ❖ Utilizing network structures and managing them.
- ❖ Utilizing computerized media applications for pedagogical management and development.
- ❖ Monitoring and implementing televised education and distance learning projects.
- ❖ Providing technical support for instructional design and production through computerized media.
- ❖ Training and mentoring those involved in distance learning.

This center includes the following branches:

- * "Systems" branch.
- * "Networks" branch.
- * "Televised Education and Distance Learning" branch.



The Technological Hall

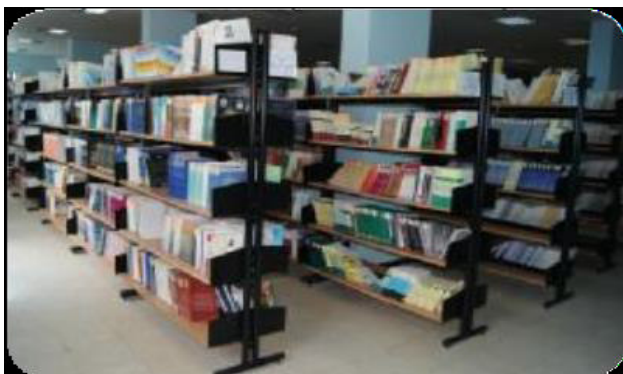
This division is responsible for ensuring technical support to Faculty and institutes in organizing and conducting directed and applied work in technological sciences. Additionally, it manages and maintains the necessary equipment for the smooth operation of practical activities.



The Central Library



The university library is considered a mirror reflecting the image of the university, its progress, development, and its alignment with scientific advancements. It represents an information system whose main mission is to provide its beneficiaries with high-quality information according to their specializations and requirements. Mohamed Seddik Ben Yahya University strives to harness all its material and human resources to provide services that meet the aspirations of students and professors. This is achieved through enriching and renewing the library resources of the central library and its seven branches located throughout the Faculties, as well as utilizing modern technology



The Faculties

Currently, Jijel University consists of seven Faculties distributed between the Tassoust and Jijel campuses, each of which includes departments:

1. Faculty of Science and Technology

- * Department of Basic Education in Science and Technology
- * Department of Architectural Engineering
- * Department of Electro-Technology
- * Department of Methods Engineering
- * Department of Civil and Irrigation Engineering
- * Department of Mechanical Engineering
- * Department of Mechanics
- * Department of Electronics

2. Faculty of Exact Sciences and Computer Science

- * Department of Mathematics
- * Department of Computer Science
- * Department of Basic Education in Material Sciences
- * Department of Physics
- * Department of Chemistry

3. Faculty of Natural and Life Sciences

- * Department of Basic Education in Natural and Life Sciences
- * Department of Applied Microbiology and Nutritional Sciences
- * Department of Ocean Science and Agricultural Sciences
- * Department of Molecular and Cellular Biology
- * Department of Earth and Universe Sciences

4- Faculty of Law and Political Science

- * Department of Law
- * Department of Political Science

5- Faculty of Economic, Commercial, and Management Sciences

- * Department of Basic Education in Economic, Commercial, and Management Sciences
- * Department of Management Sciences
- * Department of Commercial Sciences
- * Department of Economic Sciences
- * Department of Finance and Accounting

6- Faculty of Humanities and Social Sciences

- * Department of Basic Education in Social Sciences
- * Department of Basic Education in Humanities
- * Department of Psychology, Education Sciences, and Orthophonics
- * Department of Media and Communication
- * Department of Sociology
- * Department of Sports Sciences and Techniques

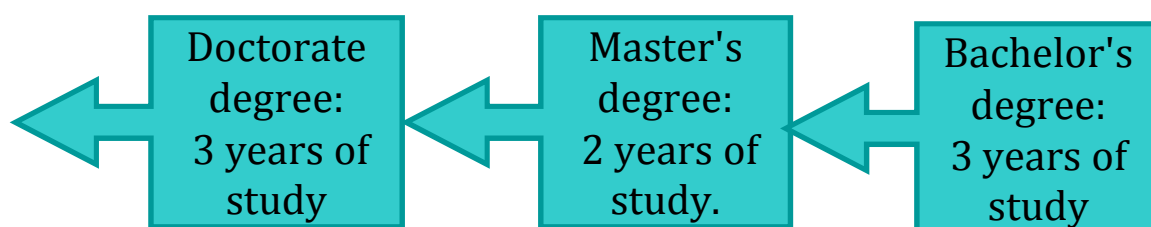
7- Faculty of Arts and Languages

- * Department of Arabic Language and Literature
- * Department of Arts and French Language
- * Department of Arts and English Language

University Studies:

<i>The New Structure of Higher Education.....</i>	<i>18-23</i>
<i>Educational Organization.....</i>	<i>24-33</i>
<i>The Disciplinary Council.....</i>	<i>34-36</i>
<i>Administrative and Pedagogical Services for Students...</i>	<i>37-38</i>

- ❖ The L.M.D. system, which stands for License-Master-Doctorate, represents a globally recognized higher education structure. This system provides accredited degrees that better respond to the real needs of the job market, thanks to effective educational programs and diverse and coherent training paths.
- ❖ The L.M.D. system is based on three stages of education, each leading to a university degree:
 1. First stage: Baccalaureate + 3 years, resulting in a Bachelor's degree (academic or professional).
 2. Second stage: Baccalaureate + 5 years, resulting in a Master's degree (academic or professional).
 3. Third stage: Baccalaureate + 8 years, resulting in a Doctorate degree.
 The duration of each stage is as follows:



Key features of the L.M.D. system:

The L.M.D. system is based on a more coherent vision of providing education, organized into fields of study structured as typical paths. The model path represents a harmonious arrangement of educational units within a defined curriculum offered by the training team.

The model path allows students to gradually build their educational project. Each student can create an individualized path with the assistance and guidance of one or several training teams from one or multiple higher education institutions.

Courses are coordinated and organized into major fields of study. Based on this, students are directed towards their desired specialization according to their skills and abilities.

Field:

The field of training consists of a set of disciplines and specializations that are harmonized in terms of educational programs, scientific skills, and technologies, which translate into the competencies of the higher education institution.

Discipline (Training Offer):

The discipline is a branch of the training field and determines the specificity of education within it. A discipline can be single-specialty or multi-specialty.

Specialization:

The specialization is a subdivision of the discipline and defines the training path and the competencies that the student must acquire.

Educational Units:

An educational unit consists of one or more subjects organized in a pedagogically coherent manner, such as lectures, guided work, practical activities, projects, internships, etc. An educational unit can be mandatory or elective. These units are offered over a period of six months, with the aim of achieving tangible competencies. Educational units and their constituent subjects are assigned credits and are evaluated accordingly.

The value of an educational unit is measured in credits, based on the number of hours required in the semester to acquire knowledge and qualifications through the aforementioned forms of education. It also depends on the volume of activities that the student is required to undertake in the same semester (individual work, reports, papers, internships, etc.).

Educational units are distributed over semesters and are divided into:

- 1. Core Education Unit:** It includes the essential subjects necessary for continuing studies in the respective discipline.
- 2. Exploratory Education Unit:** It includes educational materials that enable the student to broaden their knowledge horizon and open up other avenues in case of redirection, thanks to the diversity of subjects that characterize this concept.

03. Methodological Education Unit:

Brings together educational materials related to the methodological tools necessary to help students achieve their training path.

04. Presentation Education Unit:

Brings together educational materials such as living languages, computer science, information and communication technologies, humanities, etc., which are essential tools for acquiring general culture and methodological techniques that facilitate professional integration and adaptation to a constantly changing environment.

Credit:

One credit is equivalent to a workload of 20 to 25 hours per semester, including teaching hours provided to students through various forms of education, as well as estimated hours for students' individual work. The total value of credits assigned to the educational units comprising the semester is thirty (30) credits.

Transfer:

A transfer is an opportunity for students to modify their training path in their original institution or in another institution according to the principle of mobility.

Bachelor's Degree

The Bachelor's degree is the first level of higher education, which students obtain after completing a six-semester academic journey. It includes multidisciplinary foundational training (or core training) ranging from one to four semesters, dedicated to acquiring the initial principles of the degree's relevant specializations and familiarizing oneself with the principles of university life and exploration. It is followed by specialized training in two branches:

Academic Track:

This option allows for the pursuit of academic education starting from the Bachelor's level to the Doctorate, passing through the Master's degree. This training option can be either a fundamental or an academic study type, depending on the acquired qualifications, obtained results, and admission requirements.

Digital copies of all academic transcripts for the academic track followed.

Vocational Branch

It is an educational option that allows students to obtain a professional bachelor's or master's degree, which enables them to directly integrate into the workforce. Its programs are determined through extensive consultation with the employment sector.

This branch requires different types of professional bachelor's degrees to ensure its effectiveness and the need to specify a specialization related to the profession.

M. Master

The master's degree has a national character and is open to candidates who meet the conditions specified in Decision N° 998 dated 02 August 2022, which determines the conditions for admission and registration in higher education to obtain a master's degree, regardless of their original institutions.

Students are informed about the available master's programs each academic year through publication on the website of the Ministry of Higher Education and Scientific Research and other communication channels immediately after the qualification decisions are issued.

Registration for master's studies is subject to the following criteria:

- ❖ The candidate's expressed preference in the preference card.
- ❖ The candidate's academic track record.
- ❖ The capacity for acceptance and supervision in the master's program.
- ❖ The degree obtained by the candidate, which allows for studies in the master's program.

The branches that are allowed to join the master's program are determined in the conditions booklet for master's training, and students must be informed about them through publication and other communication channels.

Registration Process:

Candidates wishing to enroll in the master's program must submit their registration file electronically through the platform: <https://prores.mesrs.dz/webinscription>.

To register for the first or second year of the master's program, candidates must provide the following documents:

- ❖ A digital copy of the baccalaureate certificate or an equivalent foreign certificate.
- ❖ A copy of the certificate allowing registration in the master's program.
- ❖ A motivation letter accompanied by a preference card according to a downloadable template from the institution's website

- ❖ Certificate of good conduct and behavior issued by the original institution.
- ❖ Students who have received a second-degree disciplinary penalty during their bachelor's degree program are prohibited from registering for the master's program for a period of one year starting from the date of the disciplinary council meeting.
- ❖ When reviewing candidates' files, the pedagogical results of the academic track and relevant data are taken into consideration. Candidates may undergo an examination or an interview before a committee formed by the master's training team.
- ❖ The university annually determines the capacity for admission in terms of academic positions for the master's program. It also determines their distribution into sessions according to each category of the following graduates:
 1. Graduates of the institution, newcomers, with a Bachelor's degree (L.M.D system).
 2. Graduates of other institutions, newcomers, with a Bachelor's degree (L.M.D system).
 3. Graduates of the institution, old system (L.M.D).
 4. Graduates of other institutions, old system (L.M.D).
 5. Graduates of the classic system.
 6. Holders of a recognized foreign degree.
 7. Graduates employed in the economic and social sector.
- ❖ The higher education institution guarantees registration in the first year of the master's program for all its candidates who hold a bachelor's degree and graduated in the latest batch. It provides an additional quota of up to 20% of the available academic seats in the first year of the master's program for each training program offered to former graduates of the institution and candidates from other higher education institutions.
- ❖ The distribution of the total quota among different categories of graduates is determined by the university's assessment.
- ❖ Registration for the master's program for graduates employed in the economic and social sector is carried out under an agreement between the university and the relevant sector.

Registration in the first year of the master's program is open to:

- ❖ Graduates holding a bachelor's degree in the (L.M.D system) or an equivalent foreign degree.

❖ Candidates who hold a Baccalaureate +4 years in the classic system, a bachelor's degree in the old system, a postgraduate degree, or any equivalent foreign university degree are subject to the specified registration requirements.

❖ The announcement of enrollment in the first year of the master's program is made by the institution after the ranking process based on the candidates' merit, as mentioned above. The candidates are informed of this ranking through publication and other communication channels.

Registration in the second year of the master's

❖ program may be allowed to obtain a master's degree based on the approval of the Ranking and Guidance Committee for those who:

- 1- Hold a Baccalaureate +5 years degree awarded by higher education institutions, or candidates with an equivalent recognized foreign degree.
- 2- Hold a degree in medical sciences awarded by higher education institutions, or candidates with an equivalent recognized foreign degree.

❖ Admission to the master's program is based on competition based on the degree or exams within the available academic seats.

❖ Master's degree holders can apply for registration at the higher education institution to prepare for a second master's degree within the remaining academic seats of the additional quota.

The doctoral degree

❖ Represents the final stage in the (L.M.D) system, where the student who holds a master's degree can continue their studies in research and dedicate themselves to the profession of researcher or assistant professor.

❖ The doctoral program should have a minimum duration of six semesters. Given the significant development in information and specialized fields, as well as the applied nature of research, the program should ensure deepening knowledge in the field of specialization and developing preparedness for research practice and collaborative work.

This program culminates in a doctoral degree after the preparation of a research dissertation.

Training organization:

❖ The training is organized to obtain a bachelor's degree or a master's degree in fields and branches that branch out into academic or professional specializations. This organization allows the student to choose either the typical path or build an individual training path based on their qualifications and future professional project.

❖ The training, according to the various paths and levels, includes theoretical, methodological, and practical education. Additionally, depending on its goals, it may include elements of general culture, pre-professional elements, professional elements, individual or group projects, internships, and learning academic work methods, using documentation sources and IT media, as well as proficiency in foreign languages. The training may also involve the preparation of a report, an internship report, or the completion of a final project, and in the second phase, training the student in research.

❖ Education in each training path is organized into semesters that include teaching units. The training paths for obtaining a bachelor's degree are organized into six semesters, consisting of three stages:

1. The first stage is an introductory stage to university life, adaptation to it, and discovering the initial principles of specializations.

2. The second stage is a deepening stage, consolidating knowledge, and gradual guidance.

3. The third stage is a specialization stage, allowing the acquisition of knowledge and qualifications in the chosen field.

❖ The training paths for obtaining a master's degree are organized into four semesters, consisting of two stages:

1. The first stage is dedicated to common education for several branches and/or specializations within the same training field, as well as deepening knowledge and gradual guidance.

2. The second stage includes specialization in training and training the student in research and the preparation of a report.

Lesson format



❖ The purpose of the lesson is to present the theoretical aspect of the subject being taught. The delivery of lessons and guided activities can be ensured either in-person or remotely, depending on the training team's assessment.

❖ Guided activities aim to help students comprehend and deepen the knowledge presented during the lesson through practical exercises or any pedagogical activity chosen by the teaching team. Attendance in guided activities is mandatory, and the teacher in charge of the guided activities must monitor attendance for each session, taking it into account during the assessment process.

❖ Applied activities aim to assist students in applying some or all of the knowledge presented in the lesson, which has been deepened in the guided activities. They can also serve as a means of clarification and support for the lesson.

❖ Attendance in applied activities is mandatory, and the teacher in charge of the applied activities must monitor attendance for each session in order to calculate absences, which are taken into account during the assessment process.

❖ Wearing appropriate attire (work apron) is mandatory in laboratories or workshops. The teacher in charge of the applied activities prepares them, with the assistance of laboratory engineers and technicians.

Assessment and Progression:



Forms of Assessment:

- ❖ The student's evaluation and progression occur annually. Evaluation can take the form of continuous monitoring, final exams, or a combination of both, as determined in the training program. The various forms of assessment should aim to ensure the student's abilities and competencies, particularly in areas of summarization, analysis thinking., and critical
- ❖ At the beginning of each semester, the department head, in consultation with the training team, determines the schedule, teaching methods, and forms of assessment. This information is communicated to students and teachers through all available means of communication.
- ❖ Student evaluation includes the following:
 - * Lessons
 - * Guided activities
 - * Applied activities
 - * Workshops
 - * Field trips
 - * Practical internships
 - * Personal work
- ❖ The grade for guided activities is calculated based on the student's evaluation marks. The grade for applied activities or workshops is based on exam scores and report marks, following a specified weighting in the training program. The assessment methods and their weighting are determined in the training program.
- ❖ There are two exam sessions for each semester: a regular session and a makeup session. The makeup session takes place after the annual deliberations of the regular sessions. Participation in the deliberations is a pedagogical practice that culminates all the pedagogical duties of the teacher. A semester or annual deliberation committee is established each academic year.
- ❖ The committee is responsible for approving the final exam results and considering the possibility of remedial measures based on individual cases. Deliberations are conducted exclusively through the digital platform under the supervision of the Ministry of Education, Higher Education, and Scientific Research, within the integrated information system known as "Progrès."
- ❖ The finalized deliberation results are communicated to students through their digital space (e-publishing).

Progression in Training

The transition from the first semester to the second semester of the same academic year and the same training program is considered a right for every regularly enrolled student.

Progression in training to obtain a bachelor's degree

A student acquires a study unit if they pass all the constituent subjects, resulting in the accumulation of assigned credits.

A study unit can also be acquired through compensation if the total marks obtained in the constituent subjects, weighted by their coefficients, equal or exceed (10/20).

The acquired credits can be retained within the same training phase or transferred to another training track that includes this study unit.

Exclusion from any of the constituent subjects of a study unit is not allowed, regardless of the average marks obtained in the other subjects of this study unit.

In all cases, the acquired subjects remain eligible for retention.

A semester is acquired by a student who passes all the study units it comprises, with the semester average equaling or exceeding (10/20). It can also be acquired through compensation between the constituent study units, weighted by their coefficients, with the semester average equaling or exceeding (10/20). The acquisition of a semester results in the accumulation of thirty (30) credits assigned to it.

A student is allowed to transition from the first year to the second year of a bachelor's degree program in the following two cases:

1. By acquiring the first two semesters with a total of sixty (60) credits, either with or without compensation.
2. By acquiring a minimum of fifteen (45) credits between the two semesters.

And the transition from the second year to the third year is allowed either by:

1. Acquiring all four semesters with a total of 120 credits, either with or without compensation, or by acquiring a minimum of 105 credits.

In case of transferring with a debt, the student's new grade in the subject related to the debt is taken into account if it is higher than the grade obtained in the previous academic year.

2. In the case of failure in the regular session, the student can participate in the makeup session for the non-acquired exams and retain the acquired subjects.

❖ The final grade for the subject is the average between the continuous assessment grade and the highest grade obtained in both the regular and makeup sessions.

❖ A student cannot stay in the training program for more than 5 years to obtain a bachelor's degree, even in the case of redirection.

Progression in Training for a Master's Degree

❖ The transition from the first year to the second year of a master's degree program is allowed if the student acquires all six semesters with a total of 60 credits, either with or without compensation. The second year is acquired without compensation between the third and fourth semesters. In case of failure in the regular session, the student can participate in the makeup session for the non-acquired study units.

❖ A student cannot stay for more than three (3) years to obtain a master's degree, and years of training suspension are not taken into account, while years of interruption in training are considered.

A student who has not acquired 120 credits within 3 years of training is excluded from obtaining a master's degree, and years of training suspension are not taken into account, while years of interruption in training are considered.

❖ The final thesis for obtaining a master's degree is defended in two sessions, regular and makeup.

❖ The master's degree is awarded to students who have fulfilled the academic progression requirements in the training program and have acquired 120 credits.

After completing the Master's degree,

❖ the Ministry of Higher Education and Scientific Research has introduced the requirement to allocate at least one educational module for preparing a final thesis or project.

❖ At the level of higher education institutions, a mechanism has been established to obtain the "University Certificate - Startup Institution" distinction or to submit a request for a patent (University Certificate - Patent).

❖ The proposal for the final thesis or project can be made by participating research professors at the university institutions, by the concerned students themselves, or in coordination with a professional from the social and economic sector, provided that the number of participating students in preparing this project does not exceed six (06) students, and the training teams approve the topics of these projects.

❖ Different specializations can prepare a thesis within the framework of the "University Certificate - Startup Institution" or "University Certificate - Patent." The subject of the thesis or final project is approved by the training teams and the accompanying entities (business incubator, entrepreneurship center, etc.).

❖ The thesis or final project can only be defended after approval by the supervisor(s).

❖ The defense of the thesis or the results of the final project are organized in regular and makeup sessions.

❖ After the defense, the student is given an assessment grade based on the results obtained, and the student is declared successful. As for the students involved in the defense of the theses (University Certificate - Startup Institution, etc.), they are awarded a grade based on their attainment of the "Innovative Project" or "Startup Institution" label. The project is evaluated as follows:

1. Clarity and soundness of the main idea: 20% of the final grade.
2. Innovative aspects of the project: 25% of the final grade.
3. Validity of the business model canvas (BMC): 30% of the final grade.
4. Achievement of the initial prototype: 25% of the final grade. The defense grade is not considered in compensating between the semesters of the same year

Attendance and Absence during the Training Program

Lessons and guided activities can be provided either in person or remotely, based on the opinions of the training team. The attendance of students in guided activities, workshops, and practical work is mandatory throughout the semester. The professor responsible for guided activities and/or practical work must monitor attendance in each session in order to account for absences during the evaluation process.

Students who are subject to medical monitoring or participate in elite sports competitions benefit from a flexible attendance system determined by the department head, according to their commitment requirements based on documentary evidence issued by the relevant authorities.

In the case of justified absence from a guided activity session, practical work, workshops, or continuous monitoring, the student is entitled to a compensatory session only once, before the final exams period during the semester. If the student is absent from the compensatory session, they will receive a "zero" grade for that session.

In the case of unjustified absence from continuous monitoring, a guided activity session, practical work, or workshops, a "zero" grade will be awarded in that case.

A student who is absent from a guided activity session, practical work, or workshops must provide justification to the department within three (3) days following the date of absence. The department head will endorse the justification, indicating the date of submission, before sending it to the responsible person for the subject or the relevant teaching unit, and the justification document will be kept in the student's pedagogical file.

Absence is considered justified in the following cases:

- 1- Death of immediate family members or relatives.
- 2- Marriage of the concerned student.
- 3- Maternity or paternity leave of the concerned student.
- 4- Illness of the concerned student.
- 5- Official assignment or summons.



All other cases are subject to the evaluation of the department head.

The aforementioned cases of absence should be justified with documentary evidence issued by the authorized authorities.

Examination Procedures and Absences:

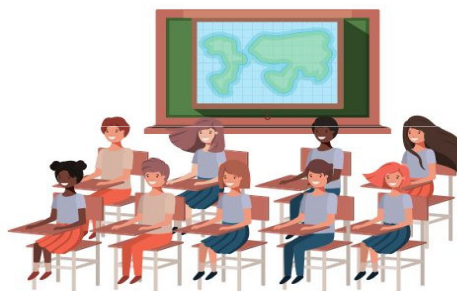
- Professors and students must be informed of the examination timetable at least fifteen (15) days prior to the specified date of the first exam. This should be done through legal publications and digital platforms.
- The conduct of examinations is subject to the rules stipulated in the regulatory laws.
- At the end of the examinations, the names of the supervising professors are recorded in a prepared form in advance.

Absence from an Examination:

- A student has the right to take a makeup exam if their absence from the exam is justified, or if they fail the exam. They are allowed to participate in the makeup session. However, if the absence is unjustified, they are given a zero grade and allowed to participate in the makeup session.
- A student who is excluded from a subject or educational unit due to disciplinary measures is not entitled to receive a grade for that subject or unit, nor are they allowed to participate in the makeup session for that subject or unit.
- A student in a state of discontinuation from education is not allowed to participate in the regular or makeup examinations.

Examination Results and Accessing them:

- Every professor must publish a corrected model of the exam topic along with the grading scale in all publications. Additionally, students have the right to access their answer sheets for regular exams, excluding makeup exams.
- The relevant professors are required to input the final grades on the digital platform.



Administrative Situations:**1. Suspension of Education:**

- Students can exceptionally benefit from suspending their education in the following situations:

- 1- Chronic disabling illness
- 2- Maternity leave
- 3- National service
- 4- Change of residence for the student, spouse, or parents
- 5- All other situations are subject to the evaluation of the institution's director.

The aforementioned situations must be supported by official documents issued by the authorized authorities. The suspension of studies can be for one semester or one academic year, and the period of education suspension is not considered as a pedagogical delay.

- The student must receive a certificate of education suspension from the pedagogical services of the institution, which is mandatory and issued by the registration office.

- Except in cases of force majeure, the student must submit a request to benefit from the suspension of education to the relevant authorities before the first examinations.

- After the end of the education suspension, the student can submit a request for reintegration to the pedagogical services, accompanied by the necessary justifications.

2. Discontinuation of Education:

- A student is considered to be in a state of discontinuation if they have not attended any form of organized education during one of the semesters of the academic year, prior to the start of the regular exams for that semester.

- The list of students declared in a state of discontinuation should be sent to the relevant university services by the university directorate.

- In the case of discontinuation of education, the affected student can submit a request for re-registration to the pedagogical services at their original institution, accompanied by the necessary justifications.

- Upon re-registration, the student receives an administrative document from the pedagogical services of the university, documenting the period of discontinuation and kept in their academic file.

Supervision:

The LMD system introduced new concepts in higher education aimed at informing and guiding students and integrating them into university life, as well as facilitating access to information about the world of work, through the adoption of the principle of supervision.

Supervision is the task of continuous monitoring and accompanying the student. In this regard, this task encompasses several aspects, including:

1. The informational and administrative aspect, which involves welcoming and guiding students who have obtained the baccalaureate certificate and are enrolled in the first year of the bachelor's degree program.
2. The pedagogical aspect, which involves supporting student learning, organizing their personal work, helping them build their educational path, and providing them with the necessary assistance to overcome any shortcomings.
3. The methodological aspect, which involves teaching university course curricula individually and collectively.
4. The technical aspect, which involves guiding students in the use of educational tools and resources, supporting them in acquiring the necessary work methods to achieve success (such as report preparation, research presentations, projects, etc.), and assisting them in finding references and audiovisual techniques and utilizing the Internet.
5. The psychological aspect, which involves motivating and encouraging students to pursue their educational path, helping them integrate into university and community life (such as sports activities, scientific clubs, cultural associations).
6. The professional aspect, which involves assisting students in preparing their **professional projects**.

The supervisor is a research professor at the university or a student pursuing their master's or doctoral studies. The supervisor guides small groups of first-year students, sharing their experience and skills, and teaching them effective work methods that help them acquire knowledge and ensure success.

Disciplinary Council:

Every student within the university campus is subject to general rules of discipline and maintaining order, based on respect for others and preserving the institution's property and facilities.

Every student is required to respect, particularly, the provisions of the institution's internal regulations.

Each student must present their identification card during every inspection by university authorities.

Every student must comply with the cleanliness and security rules established within the institution.

The disciplinary council is established at every higher education institution:

- A disciplinary council for the institution itself,
- A disciplinary council for each department, faculty, or institute.

The disciplinary council is formed by a decree from the institution's director. It consists of five permanent members and five additional members, elected from among the relevant faculty members.

One permanent member represents the students, and another additional member is elected from among the students of the relevant department.

The department's disciplinary council is responsible for adjudicating first-degree violations committed within the department.

The disciplinary council, its composition, and authority are established at every higher education institution. The faculty or institute's disciplinary council is responsible for adjudicating second-degree violations committed within the faculty or institute.

The institution's disciplinary council has jurisdiction over all violations, regardless of their degree, especially violations committed in educational and administrative spaces not directly affiliated with a specific faculty, institute, or department.

It serves as the appeal body against the decisions of the faculty, institute, or department's disciplinary council and has the authority to decide on requests for reinstatement and pardon.

Violations:

First-degree violations include:

- Any attempt at cheating, proven cheating, or premeditated cheating during an exam.
- Non-compliance with instructions issued by the administration, professors, or security personnel.
- Any unauthorized request for a second correction of an exam paper.

Second-degree violations include:

- Cases of repeated first-degree violations.
- Disrupting the smooth operation of the institution, organized chaos, violence, threats, and any form of assault.
- Possessing any means intended to cause physical harm to professors, administrative and technical staff, service users, and students.
- Forgery, use of forged documents, and alteration of the content of educational and administrative documents.
- Impersonation.
- Defamation against all employees of the university and students.
- Engaging in intentional behavior that causes chaos and disrupts educational activities, such as disrupting classes and exams or participating in gatherings that violate the rules.
- Theft, abuse of trust, and misappropriation of the institution's property, professors, and students.
- Intentional destruction of the institution's property, such as devices, furniture, and accessories.
- Insults and offensive language against all employees, professors, administrative and technical staff, and students.
- Refusal to comply with and submit to legal monitoring within the university campus.
- Violations not mentioned above can be classified by the council as either first-degree or second-degree violations based on their severity and the resulting consequences.

Penalties:

❖ The penalties applicable to first-degree violations are as follows:

- ✓ - Verbal warning.
- ✓ - Written warning recorded in the student's educational file.
- ✓ - Reprimand recorded in the student's disciplinary file.
- ✓ - A zero out of twenty automatically assigned to the exam in question in case of proven cheating or attempted cheating

Disciplinary councils must be established at the level of higher education institutions. The term of disciplinary councils is three academic years.

The penalties applied to second-degree violations are as follows:

- Exclusion from the subject or unit concerned. This exclusion automatically results in the non-approval of the results obtained by the student in this subject or unit.
- Exclusion from the semester or the current academic year, depending on whether the progression is semester-based or annual. This exclusion also leads to the non-approval of the results obtained in this semester or year.
- Exclusion for two semesters or two years, taking into account the current semester or year, depending on whether the progression is semester-based or annual. This exclusion also results in the non-approval of the results obtained in this semester or year.
- The duration of the exclusion is calculated in the academic path.
- Disciplinary penalties issued by disciplinary councils and judicial proceedings specified in legislation and regulations remain in effect and are not canceled.
- It may be necessary for the qualified educational authority to take precautionary measures while awaiting the disciplinary council's decision regarding cheating cases and second-degree violations. The duration of implementing these measures is included in the duration of the penalties.

Disciplinary Procedure:

- The person responsible for the qualified educational authority is notified in writing of each observed violation within 48 hours following the events.
- The internal regulations of the disciplinary council determine the organization and proceedings of the council and the procedures for handling the disciplinary file until the final decision is made.
- The penalty decision is communicated to the individual involved and recorded in their educational file.
- If the penalty is an exclusion for at least one year, it is published within the institution, other universities, and the National Office of University Services.
- The punished student can seek written pardon from the director of the university. This request must be submitted in writing, dated, and signed by the individual involved within a maximum period of fifteen (15) days after being notified of the decision.
- After the completion of the penalty period, the student is entitled to regain all their university rights.

The administrative and pedagogical services for students at the university and colleges are as follows:

At the central administration level:

- The Directorate of Higher Education of the University is responsible for pedagogical matters related to undergraduate and postgraduate education, continuous education, certificates, and various training programs. This is in accordance with the joint ministerial decision dated August 24, 2004, which defines the administrative organization of the University Directorate, College, and Institute.
- The responsibilities of the Directorate include monitoring issues related to the organization of education and training provided by the university.
- Ensuring compliance with the regulations in the areas of registration, re-registration, knowledge monitoring, and student transfers.
- Ensuring compliance with the applicable regulations and procedures for issuing certificates and credit transfers.
- Maintaining and updating the student roster.

At the college level:

1. Deputy deans in charge of studies are responsible for the following tasks:
 - Ensuring the management and monitoring of graduate students' registrations.
 - Monitoring the activities of teaching.
 - Maintaining the student roster and statistics.
 - Collecting and processing pedagogical information for the benefit of students and disseminating it.
2. The department chair is responsible for the following tasks:
 - Monitoring the registration and re-registration of graduate students.
 - Ensuring the smooth conduct of exams and knowledge assessment tests.
 - Ensuring the quality of teaching.

The executive decree No. 08-130 dated May 3, 2008, includes the basic law for the professor-researcher, and according to Article 58, it specifies the following high-ranking positions:

- Responsible for the field training team.

Responsibilities of the Field Team Leader:

- Facilitating the work of the training department team.
- Proposing the pedagogical program for the training track.
- Developing pathways between training tracks to enable gradual guidance for students.
- Developing compatible pedagogical curricula.
- Organizing the evaluation of training and teaching formats.
- Ensuring coherence among the tracks and providing opinions regarding the feasibility or modification of the training track.
- Ensuring overall coherence of internships specified in the training.
- Assisting the department chair in the pedagogical management of postgraduate education.

Responsibilities of the Training Department Team Leader:

- Facilitating the work of the training field team.
- Proposing the list of specializations for the department.
- Proposing the opening or closure of specializations within the department.
- Monitoring the supervision in the first phase.
- Developing methods for implementing and monitoring internships.
- Proposing pedagogical procedures for the smooth functioning of common trunks in postgraduate education.

Responsibilities of the Specialization Team Leader:

- Facilitating the work of the specialization team.
- Ensuring the achievement of training objectives in the assigned specialization.
- Proposing measures to improve the specialization training program.
- Enhancing and activating mechanisms for the professional integration of graduates.
- Proposing pedagogical measures for the smooth functioning of specialization training.

Training programs at Mohammed Seddik Ben Yahiya University

<i>Training programs at the undergraduate level.....</i>	<i>40-46</i>
<i>Training programs at the master's level.....</i>	<i>47-50</i>
<i>Scientific research.....</i>	<i>51</i>
<i>How to register at the university.....</i>	<i>52-54</i>
<i>Social security file.....</i>	<i>54</i>

Training programs at Mohammed Seddik Ben Yahiya

University propose twelve (12) fields of training in the LMD system, which are as follows:

1. Field of Science and Technology.
2. Field of Architecture and Urban Planning.
3. Field of Material Sciences.
4. Field of Mathematics and Computer Science.
5. Field of Natural and Life Sciences.
6. Field of Earth and Universe Sciences.
7. Field of Economics, Management, and Commercial Sciences.
8. Field of Humanities and Social Sciences.
9. Field of Law and Political Sciences.
10. Field of Arabic Language and Literature.
11. Field of Arts and Foreign Languages.
12. Field of Sports Sciences and Techniques.



Training programs at the Bachelor's degree level

Field: Science and Technology

This field allows students to obtain an academic or professional Bachelor's degree in a specific technological specialization. It enables students to:

- ❖Continue their studies to obtain a Master's and a Ph.D. degree.
- ❖Pursue education at all levels, including vocational training centers.
- ❖Work in various fields of production and industry, such as chemical and petrochemical industries, pharmaceutical industries, maintenance sectors, electrical and electronic industries, as well as construction and building fields

Field	Branche	Specialty	Type of Bachelor's degree
Science and Technology			Academic
	Electronics	Electronics	Academic
			Academic
	Electro-mechanics	Electro-mechanics	Academic
	Mechanics	Mechanics	Academic
	Mechanical Engineering		Academic
	Civil Engineering	Civil Engineering	Academic
	Construction Engineering	Construction Engineering	Academic
	Wired and Wireless Communications	Wired and Wireless Communications	Academic
	Public Works	Public Works	Academic
			Professional
	Biomedical Engineering	Biomedical Tools	Professional

Field: Architecture and Urban Planning

The field encompasses architecture, urban planning, and urban professions

field	Branche	Specialty	Type of Bachelor's degree
Architecture, Urban Planning and City Professions	Architecture	Architecture	Academic
	Management of urban technic	City Management	Professional
		Urban Engineering	Professional

Field: Material Science

Possible employment areas:

- Continuing studies (Master's and Ph.D.)
- Laboratories in the health sector and quality control
- Industrial institutions
- Education sector

field	Branche	Specialty	Type of Bachelor's degree
Material Science	Physics Chemistry	Radio physics	Academic
		Basic Physics	
		Material Physics	
	Chemistry	Organic Chemistry	Academic
		Analytical Chemistry	
		Pharmaceutical Chemistry	

Field: Mathematics and Computer Science**Possible employment areas:**

- Preparation for a Master's and Ph.D. degree for education or research at the university level.
- Teaching in the education sector for graduates with a Bachelor's degree in Mathematics.
- Employment in various public and private sectors for graduates with a Bachelor's degree in Computer Science.

field	Branche	Specialty	Type of Bachelor's degree
Computer Science and Mathematics	Computer Science	Information systems	Academic
	Mathematics	Mathematics	Academic
	Applied Mathematics	Applied Mathematics	Academic

Field: Natural and Life Sciences

In the field of Natural and Life Sciences, students who obtain a Bachelor's degree can work in the education sector, pursue research for a Master's and Ph.D. degree, as well as work in quality control laboratories, environmental inspections at the state and municipal levels, national farms, and chemical manufacturing institutions.

field	Branche	Specialty	Type of Bachelor's degree
Natural and Life Sciences	Agricultural Sciences	Plant Protection	Academic
	Biological Sciences	Experimental Pharmacy	Academic
		Molecular Biology	
		Biochemistry	
		Toxicology	
		Microbiology	
	Environment and Ecology	Environment and Ecology	Academic
	Food Sciences	Food Technology and Quality Control	Academic

Field: Sciences of Earth and univers

A student who obtains a Bachelor's degree in this field can:

- Pursue further studies at the Master's and Ph.D. levels.
- Basic and applied education and research in Earth Sciences.
- Work in research laboratories and analytical studies, both in the public and private sectors.

field	Branche	Specialty	Type of Bachelor's degree
Sciences of Earth and univers	Geology	Applied Geology	Academic

Field: Economic Sciences, Managementand commercial Sciences

Completion of studies in the open Master's program in the fields of business sciences, economics, management, and financial sciences.

Possible employment areas:

- Work in various economic institutions.
- Government institutions and agencies.
- National institutions for foreign trade.
- Work in the field of banking and insurance.

field	Branche	Specialty	Type of Bachelor's degree
Economic Sciences, Management and commercial Sciences	Financial Sciences and Accounting	Banking and Insurance Finance	Academic
		Accounting and Taxation	

	Commercial sciences	International Trade	Academic
		Marketing	
	Economic Sciences	Monetary and Banking Economics	Academic
	Sciences of Management	Financial Management	Academic
		Management of Human Resource Human	
		Management	

Field: Arabic Language and Literature

The field of Arabic Language and Literature opens up opportunities for students to participate in employment competitions in the education sector at all levels. It also allows them to pursue further studies for a Ph.D. degree with the aim of teaching at the university level and conducting research.

field	Branche	Specialty	Type of Bachelor's degree
Arabic language And literatue	Critical Studies	Critical Studies	Academic
	Literary Studies	Arabic Literature	
		Comparative and World Literature	
	Linguistic Studies	General Linguistics	

Field: Humanities and Foreign Languages

A student who obtains a Bachelor's or Master's degree in foreign languages can work in the education sector or teach at the university level after obtaining a Ph.D. degree. They can also engage in various professional activities such as media and communication, journalism, banking, translation, tourism and hospitality, and work in private schools and vocational training centers.

field	Branche	Specialty	Type of Bachelor's degree
Foreign Languages and Literature English Language	English Language	English Language	Academic
	French Language	French Language	Academic

Field: Humanities and Social Sciences

A student specializing in this field can work in the education sector, with the possibility of obtaining a position in various institutions, whether in the field of commerce, industry, banking and insurance, or associations. Additionally, they can pursue further studies to obtain a Ph.D. degree.

field	Branche	Specialty	Type of Bachelor's degree
Humanities and Social Sciences	Social Sciences - Sociology	Sociology	Academic
	Social Sciences - Education Sciences	Educational Psychology	
	Human sciences- information and communication sciences	Media	

field	Branche	Specialty	Type of Bachelor's degree
Physical Activity Science and Techniques Sports Training	Sports Training	Competitive Sports Training	Academic

Field: Law and Political Science

A student who obtains a Bachelor's degree in Law can:

Pursue further studies at the Master's and Ph.D. levels.

Work in fields such as law practice, judiciary, notary public, and public or private institutions.

field	Branche	Specialty	Type of Bachelor's degree
Law and Political Science	Law	Private Law	Academic
		Public Law	
	Political Science	International Relations	Academic
		Political and Administrative Organization	

Training programs at the Master's level

field	Branche	Specialty	Type of Bachelor's degree
Architecture, Urban Planning, and City Professions	Architecture	Architecture	
Science and Technology	Automation	Automation and Industrial IT	
		Automation and Systems	
	Electronics	Microelectronics	
		Electronics of Embedded Systems	
	Electrotechnics	Electrical Controls	
		Industrial Electrotechnics	
		Electric Machines	
		Electric Networks	
		Renewable Energies in Electrical Engineering	
	Civil Engineering	Geotechnics	
		Structures	
	Process Engineering	Process Engineering Materials	
		Environmental Process Engineering	
	Mechanical Engineering	Mechanical Construction	
		Energetics	
	Hydraulics	Urban Hydraulics	
	Electromechanics	Electromechanics	
	Telecommunications	Systeme of Télécommunications	
	Public Works	Paths and Works of Arts	

field	Branche	Specialty	Type of Bachelor's degree
Mathematics and Computer Sciences	Mathematics	Functional Analysis	
		Partial Differential Equations and Applications	
		Fundamental and Discreet Mathematics	
		Probabilities and Statistics	
	Computer Sciences	Computer Forensics and Multimedia	
		Artificial Intelligence	
		Networks and Security	
Matter Sciences	Physics	Physics of Materials	
		Medical Physics	
		Theoretical Physics	
	Chemistry	Chemistry of Materials	
		Organic Chemistry	
		Pharmaceutical Chemistry	
Nature and Life Sciences	Marine and Continental Hydrobiology	Aquatic Ecosystems	
	Agricultural Sciences	Phytopharmacy	
	Food Sciences	Food and Quality Control	
	Environmental Ecology	Fundamental and Applied Ecology	
	Biological Sciences	Biochemistry	
		Molecular and Cellular Biology	
		Applied Microbiology	
		Fundamental and Applied Toxicology	
Science of Earth and Univers	Géology	Engineering Geology and Geotechnics	
		Hydrogeology	
		Mineral Resources, Geomaterials and Environment.	

field	Branche	Specialty	Type of Bachelor's degree
Economics, Management, and Commercial Sciences	Management	Human Resources Management	
		Financial Management	
		Corporate Financial Management	
	Economic Sciences	International Economy	
		Economie Monétaire et Bancaire	
	Commercial Sciences	Marketing Services	
Foreign Letters and Languages	French Language	Literature and Civilisation	
		Language Sciences	
	English Language	Didactics of Foreign Languages	
	French Language	Literature and Civilisation	
Human Social Sciences	Social Sciences- Sociology	Sociology of Education	
		Sociology of Education	
		Sociology of communication	
	Social Sciences- Educational Sciences	Counseling and Orientation	
		Educational Psychology	
	Human Sciences- Information and communication sciences.	Audiovisual	
		Printed and Electronic Press	
Sciences and Techniques of Physical and Sports Activities	Sports Training	Sports and Physical Preparation	

Suit - master

field	Branche	Specialty	Type of Bachelor's degree
Law and Political Sciences	Law	Public Law	
		Family Law	
		Business Law	
		Maritime and Port Law	
		Law of Legal and Judicial Professions.	
		Energy and Mining Law	
	Political Sciences	International Cooperation	
		Local Administration.	
Arabic Language and Literature	Studies critical	Mqdern contemporary arabic criticism course	
	Linguistics	Arabic Linguistics	
		Discourse Linguistics	
	Literary Studies	Modern and Contemporary Arabic Literature	
		Algerian Literature	
		Ancient Arabic Literature	



Scientific Research

In recent years, the system of scientific research has witnessed significant developments both in terms of programs and objectives, as well as in terms of structures.

With the aim of promoting scientific research at the level of Guelma University and activating its research activities, 31 research laboratories have been established. These laboratories have been equipped with all the necessary scientific equipment and resources and made available to researchers and professors to advance research in various fields and specializations.

- Theoretical Physics Research Laboratory
- Construction and Environment Research Laboratory
- Geological Engineering Research Laboratory
- Pharmacy and Plant Chemistry Research Laboratory
- Interactions between Materials and the Environment Research Laboratory
- Materials Study Research Laboratory
- Non-destructive Testing Research Laboratory
- Multi-specialty Laboratory for Applied Humanities and Social Sciences for Development
- Pure and Applied Mathematics Research Laboratory
- Banking and Financial Law Studies Research Laboratory
- Biotechnology, Environment, and Health Research Laboratory
- Mathematics and Mathematical Applications Research Laboratory
- Industrial Electrotechnics and Electronics Research Laboratory
- Applied Energy and Materials Research Laboratory
- Condensed Matter Physics and Nanomaterials Research Laboratory
- Language, Discourse Analysis, and Child Research Laboratory
- Molecular and Cellular Biology Research Laboratory
- Mechanics Research Laboratory
- Radiation Physics and Its Applications Research Laboratory
- Materials: Preparation, Properties, and Applications Research Laboratory
- Mechatronics Research Laboratory
- Civil and Environmental Engineering Research Laboratory
- Molecular Toxicology Research Laboratory
- Information Analysis, Improvement, and Processing Research Laboratory



Conditions and Procedures for University Registration

All holders of the baccalaureate certificate or an equivalent foreign certificate are allowed to enroll in higher education and training.

Conditions for university registration are based on the following four criteria in the orientation for higher education and training:

1. Expressing the desired field of study by the baccalaureate certificate holder.
2. The field of study and the results obtained in the baccalaureate exam (weighted average or overall baccalaureate grade according to the field or specialization of registration, with additional conditions in some cases).
3. The capacity of higher education and training institutions to accommodate students within specific geographic areas.
4. Some fields and preparatory departments require minimum general baccalaureate grades for participation, and these grades do not automatically grant the right to final registration. The ranking is based on the overall grade obtained in the baccalaureate exam, and there are additional requirements for initial registration in some fields and preparatory departments.

In addition to the aforementioned conditions, admission to some fields is conditional, depending on success in a competition, proficiency test, or an oral interview with a committee.

Initial registration and guidance for new baccalaureate certificate holders are exclusively conducted online. Two dedicated websites have been allocated for this purpose, namely:

<http://www.mesrs.dz>

<http://www.orientation.esi.dz>

The term "dedicated websites" refers to the mentioned websites above. To facilitate access to these websites, free links have been provided for new baccalaureate certificate holders at open internet spaces within university institutions.

Initial Registration:

The baccalaureate certificate holder must fill out the preference card through the dedicated websites, while respecting the general rules specified in the attachments. They should also register their preferences in descending order and within the limit of four (04) allowed choices for fields of study in the LMD system and/or preparatory departments.

local or regional, people with national registration and professional training, master with a combined track, bachelor's degree in the health sector, Higher schools, higher schools for professors, branches of medical sciences, veterinary sciences and paramedical sciences

affiliated to the reminder, the wish card must be sent online exclusively through my websitedesignated for this purpose.

Initial registration is compulsory for all holders of a baccalaureate degree. Every student who does not register online in the specified deadlines loses all possibility of registration in the branch of his choice.

Automated processing

By seeing the student on one of the two previously mentioned sites, the holder of the baccalaureate degree will know the result of his guidance, and then he should confirm his direction, then he will apply for the final registrations remotely according to the schedule.

specified in respect of the allotted deadline. » Applying to the interview that takes place in the presence of his mentoring institutions or in presence in other university institutions.

The candidate who chooses to conduct the interview in another university institution must contact his mentoring institution in order to practically organize this interview.contained in the guidance cards.

In the event of failure to be interviewed, he will be automatically directed to the next candidate listed in the Desires Card, who is not subject to an oral interview and meets the minimum admission rate for this selection.

Redirect

In the special case in which the student did not obtain any of his choices, a second process of initial registration is suggested to him. He must fill out another wish card in descending order. This card must contain six (06) choices, including two (02), and obligatory in the bachelor's tracks with local or regional registration, following the same first procedures, while respecting the minimum enrollment rates and within the limits of pedagogical seats. Available according to the schedule specified in the ministerial circular related to initial registration and guidance for holders of a baccalaureate degree.

Important :

The holder of a baccalaureate degree must specify in his wish card, among the options, at least two (02) tracks of training in the bachelor's degree with local or regional registration guaranteed by a university institution.

University final registration file

Final registration for new baccalaureate degree holders takes place across the line, following the procedure indicated on the floorPROGRES and respecting the set schedule.

- 1- The original copy of the baccalaureate score list will be deposited later at the level of the orientation institution.
- 2- The guidance statement contains the choice that the student directed to and is printed from the Internet
- 3-The original transcript of the baccalaureate certificate (registration fee (200) Algerian dinars).
- 4-(2) Photographs.

Social Security file

The student goes to the social security office at the campus level with the following

documents attached to form the initial social security file.

- 1- A true copy of the school certificate
- 2- Student birth certificate No. (12).

University services

<i>Grant file.....</i>	<i>57-58</i>
<i>The accommodation file.....</i>	<i>59-60</i>
<i>Scientific activities and clubs</i>	<i>61-62</i>



University services

» The National Office for University Services, through its national network of directorates of university services and university residences, ensures the provision of a suitable atmosphere for students by providing a group of services.

» During the university registration stage, universities harness all their means to ensure successful registration for students. They also open windows for university services. In addition to the windows for educational registration, they receive student files related to university services (accommodation, grants Transport...).

Grant

» Each student enrolled in one of the branches of higher education benefits from a university scholarship throughout his study period, the value of which is: 4050 DZD, 3600 DZD, or 2700 DZD, according to the annual income of the parents, to be paid every three months.

Grant file

The student is obligated to register through the digital platform of the scholarship:
<http://progres.mesrs.dz/webonou/login.xhtml>

- » A copy of the baccalaureate degree
- » A copy of the school certificate for the current academic year.
- » Nationality certificate for the student or parents born abroad.
- » ID photo
- » A crossed-out check for the student's current mail account or balance statement.
- Parents' income statement

Employed parents

- » Annual salary statement.
- » Certificate of not being subject to tax.

Pensioners

- » Annuity statement
- » Tax exemption certificate.

merchants and artisans

- » Merchants' income certificate from the Tax Authority.
- » Certificate of not being subject to tax, net of debt.

Non-workers and the unemployed

- » A certificate of non-work is issued by the municipality.
- » Tax exemption certificate.

Deceased or divorced

- » Death certificate for deceased parents.
- » A certificate attesting to the judicial ruling concerning the divorced parents

Quartering

- » Students are accepted in university residences within the limits of the available reception capacities according to each university city, and only students whose age does not exceed 28 years and who live 50 km or more from the place of their pedagogical registration for males benefit from the accommodation, and 30 km or more for females, with the exception of areas of difficult geographical nature.
- » University accommodations cover all students' needs, such as restaurants, reading halls, gymnasiums...etc

Accommodation file

The student is required to register via the digital platform

After that, he must submit the accommodation file, which consists of the following documents:

- » A copy of the baccalaureate transcript
- » A copy of the school certificate for the current year
- » Two general and chest medical certificates)
- » Residence
- » certificate, two photocopies
- » Payment of registration rights

Feeding

Every resident or non-resident student can benefit from a meal in the university restaurant, provided that the student card is shown

Feed File

- » Written request
- » A copy of the registration certificate
- » Two solar photos

University transportation

To benefit from the university transfer, the university student must register via the electronic link of the Ministry of Higher Education and Scientific Research

University transfer file

- » A copy of the current school certificate
- » Two solar photos
- » Payment of participation rights in university transportation estimated at 135 DZD.

University transportation

To benefit from the university transfer, the university student must register via the electronic link of the Ministry of Higher Education and Scientific Research

University transfer file

- » A copy of the current school certificate
- » Two solar photos
- » Payment of participation rights in university transportation estimated at 135

Protection

University residences have the necessary health structures and means in order to protectand protect resident students from all health risks. Several clinics equipped with medical staff at the poles level ensure the health of students, teachers, employees and workers by providing first aid and providing them with health care.



The university is an environment for activities and education

A student who has recently joined the university can discover a completely different environment than the one he was accustomed to during his high school studies the university.

Among the tasks of the Sub-Directorate of Scientific, Cultural and Sports Activities:

- » Promotion and development of scientific and cultural activities at the university.
- » Organizing recreational activities.
- » Supporting sports activities within the framework of university sports.
- » In addition to ensuring the embodiment of every cultural, scientific, humanitarian or sports initiative for the student.

University residences are available on the necessary structures, means, and capabilities to establish clubs and associations to practice scientific, cultural, and sports activities. Libraries, reading rooms, and free internet rooms have been placed at the disposal of resident students.

Currently, several student organizations and scientific clubs are active at the University of Jijel, whose main objective is to participate in supporting the improvement of the student's academic level and directing and participating in various student initiatives, whether scientific, cultural or sports.

Student organizations

UNEA-National Union of Algerian Students.

ONEL - National Organization of Free Students

UGEL - General Union of Free Students.

LNEA National Association of Algerian Students.

ONSE National Student Solidarity Organization

UGEA National General Union of Algerian Students.

ONEA - National Organization of Algerian Students

AREN Alliance for National Student Renewal.

MNEA - National Movement of Algerian Students.

REAL - Rally of Free Algerian Students.

VNEA - The National Voice of Algerian Students.



Scientific clubs at the university

A number of scientific and cultural clubs are active at the University of Jijel in an effort to promote knowledge and broaden horizons science in various disciplines.

- » Esperanza Scientific Club
- » Scientific Club Economic Welfare
- » Horizons Scientific Club
- » Scientific Club Pioneers of Law
- » Scientific and Technological Club
- » J-Armania Scientific Club
- » Bridge Scientific Club



Cultural life

The Department of Cultural and Scientific Activities seeks to develop a different and rich university cultural life, as it works to integrate students in the various activities held on campus.

- » Celebration of national and international days and holidays.
- » Presenting recreational activities (music, theatrical performances, cinema...).
- » Helping student clubs and societies implement their initiatives and activities.
- » Organizing information days and awareness exhibitions.

In addition to programming a series of lectures and discussions throughout the year on various topics.

Sports activities

The Sports Activities Department seeks to ensure a multidisciplinary sports framework by organizing local, regional and national events for the benefit of students wishing to participate in various sports activities and competitions.



- Deputy Directorate for Development, Prospecting, and Guidance	034547305
Department of Certificates and Equivalencies	034474827
The Central Library	034547126
Faculty of Science and Technology	034503636
Faculty of Natural and Life Sciences	034474896
Faculty of Law and Pulitical Sciences	034547069
Faculty of Economies Management and Commercial Sciences	034547084
Faculty of Letters and Languages	034547056
Faculty of Humans Social Sciences (HSS)	034547695



UNIVERSITY OF JIJEL
JIJEL 2023/2024